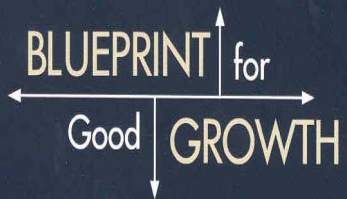


Blueprint for Good Growth

Adequate Public Facilities Overview



What is APF?

- A requirement that:
 - specified public facilities and services
 - in defined areas
 - are available
 - at the adopted level of service (LOS) standard
 - at the time that the impacts of development will be felt
 - so that adopted levels of service are maintained

APF is NOT

- rezonings (or downzoning) of property
- exaction/dedication requirements
- impact fees
- moratoria

APF Implementation Considerations

- Areas of applicability
- Public facilities included
- LOS standards
- Current & projected capacities
- Types of applicable development
- Timing of determination
- Effect of failure to meet LOS
- Allocating/monitoring capacity

TODAY WE'LL STUDY AN ERA WHEN A RECORD-HIGH STUDENT POPULATION WOULD HAVE AROUSED AMERICA'S CIVIC CONSCIOUSNESS AND MONEY WOULD HAVE FLOWED INTO SCHOOLS.

ANCIENT HISTORY

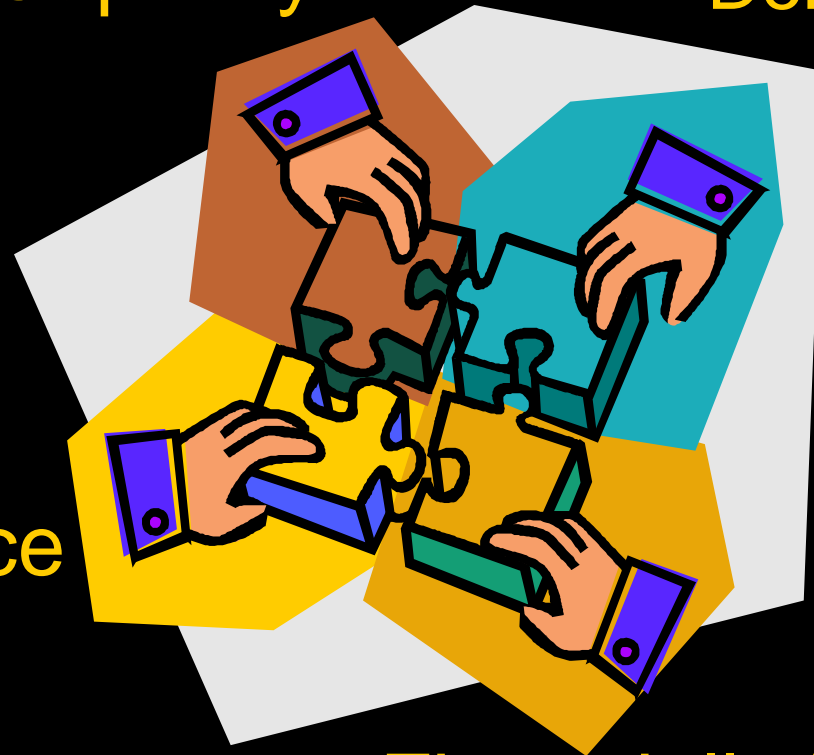
9 10 11 12 13 14 15

Assembling the Pieces

Capacity

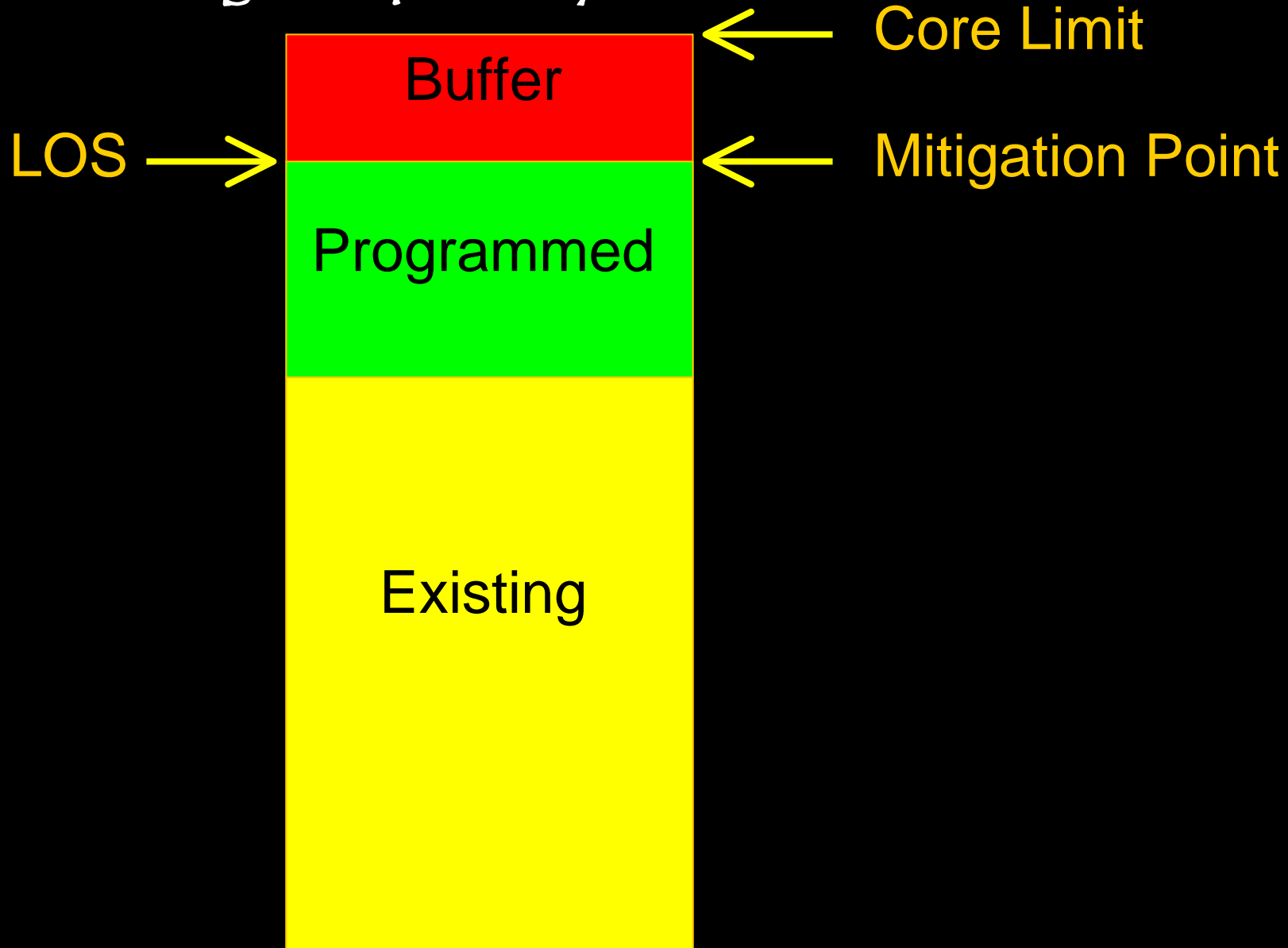
Demand

Level of Service



Financially Feasible
Capital Plan

Measuring Capacity



Defining Capacity

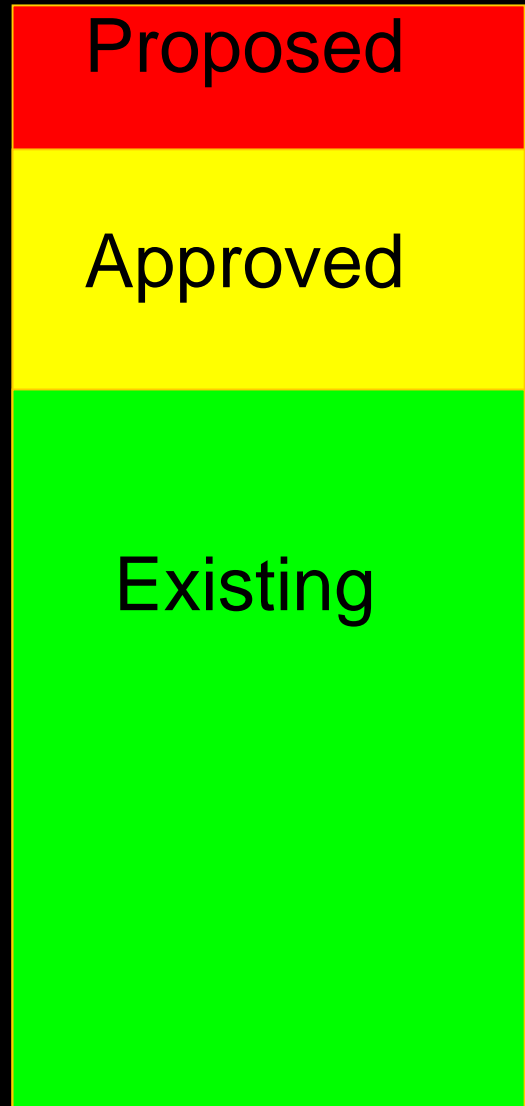
- Permanent classroom capacity
- Impacts of class size
- Core facilities
- Programmatic/operational adjustments
 - Split sessions
 - Year-around schools
 - Floating teachers
 - Other
- Role of Portable Buildings

Measuring Demand

Proposed – students from proposed development

Approved – students from existing platted lots & other entitled development

Existing – enrolled students from existing development



Setting Level-of-Service Standards

- Define capacity
- Allow for programmatic adjustments
- Plug into financially feasible capital facilities plan
- Evaluate ability to achieve desired LOS with available funds

